

**Figure S1.** Disease symptoms of melon F<sub>2</sub> populations 14 days after being inoculation with *P. xanthii* race 5.



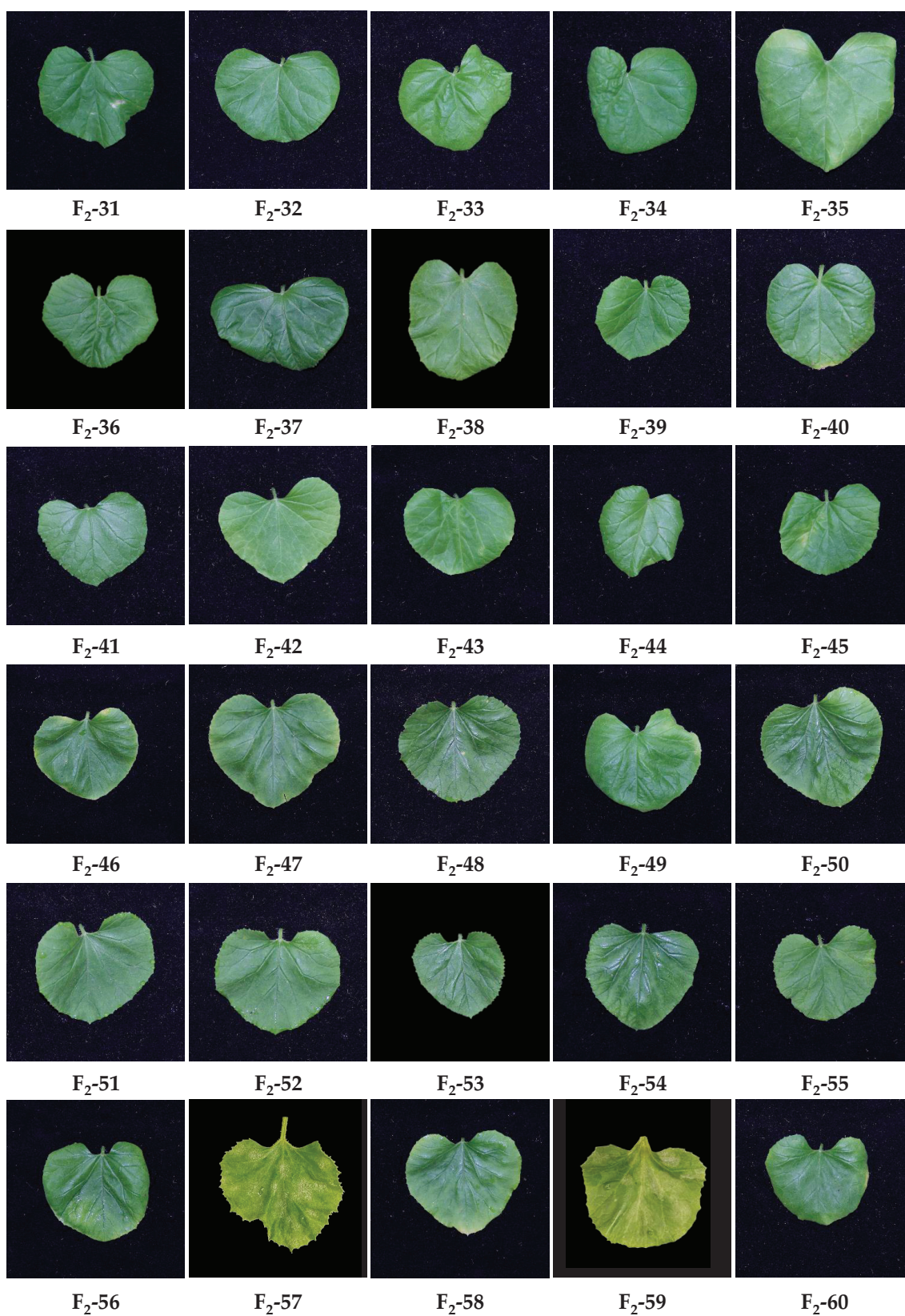


Figure S1. Continued



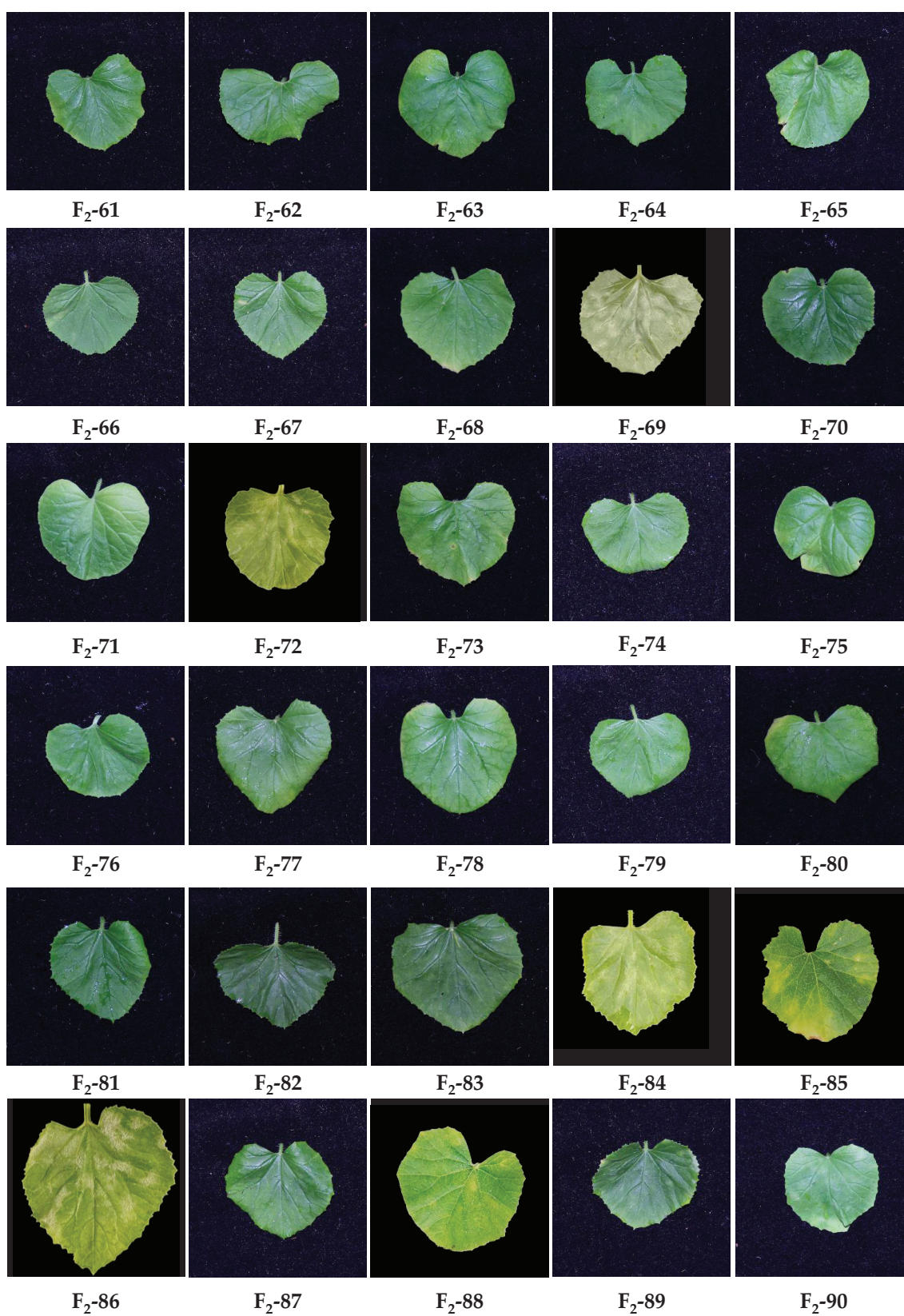


Figure S1. Continued

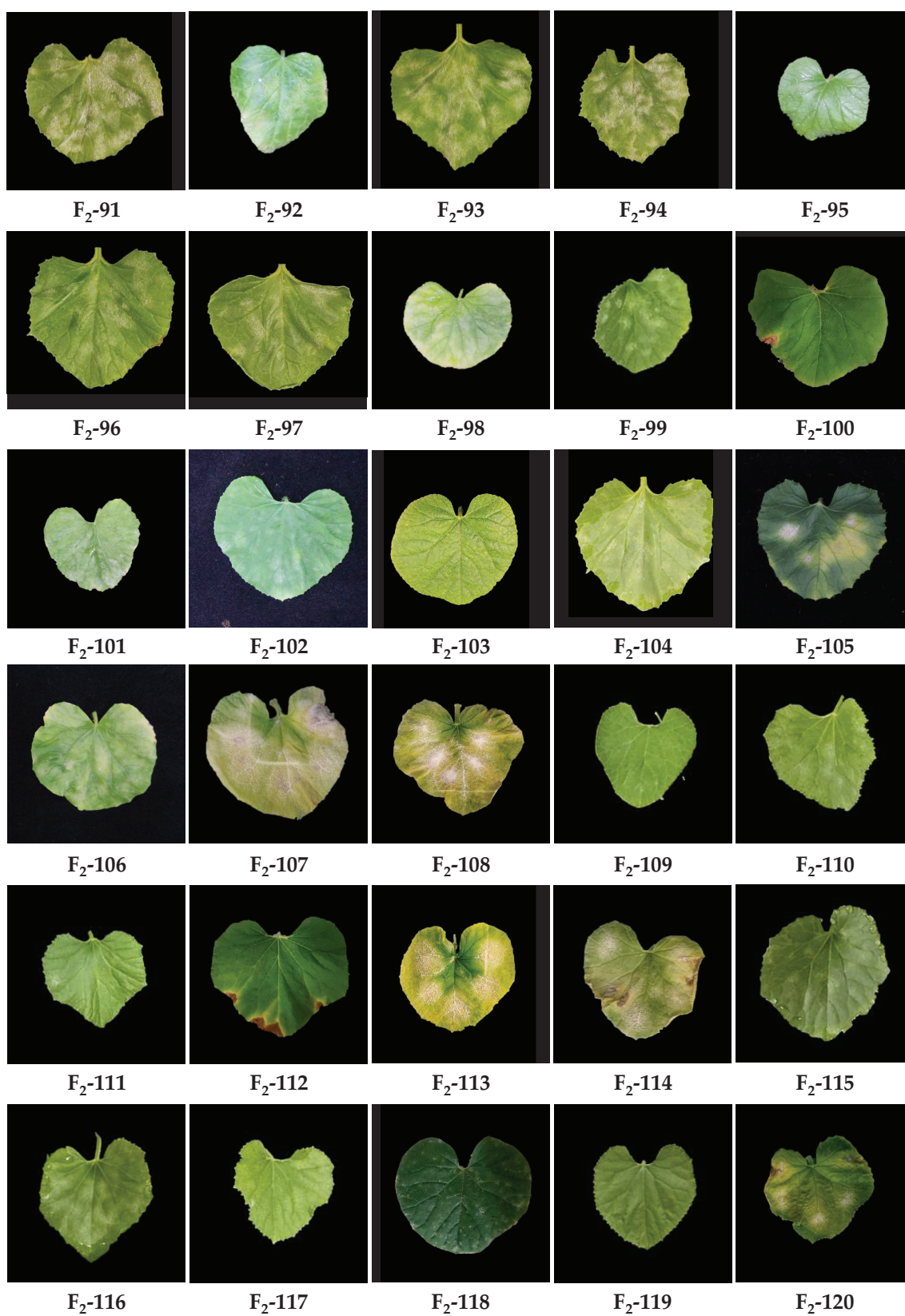


Figure S1. Continued



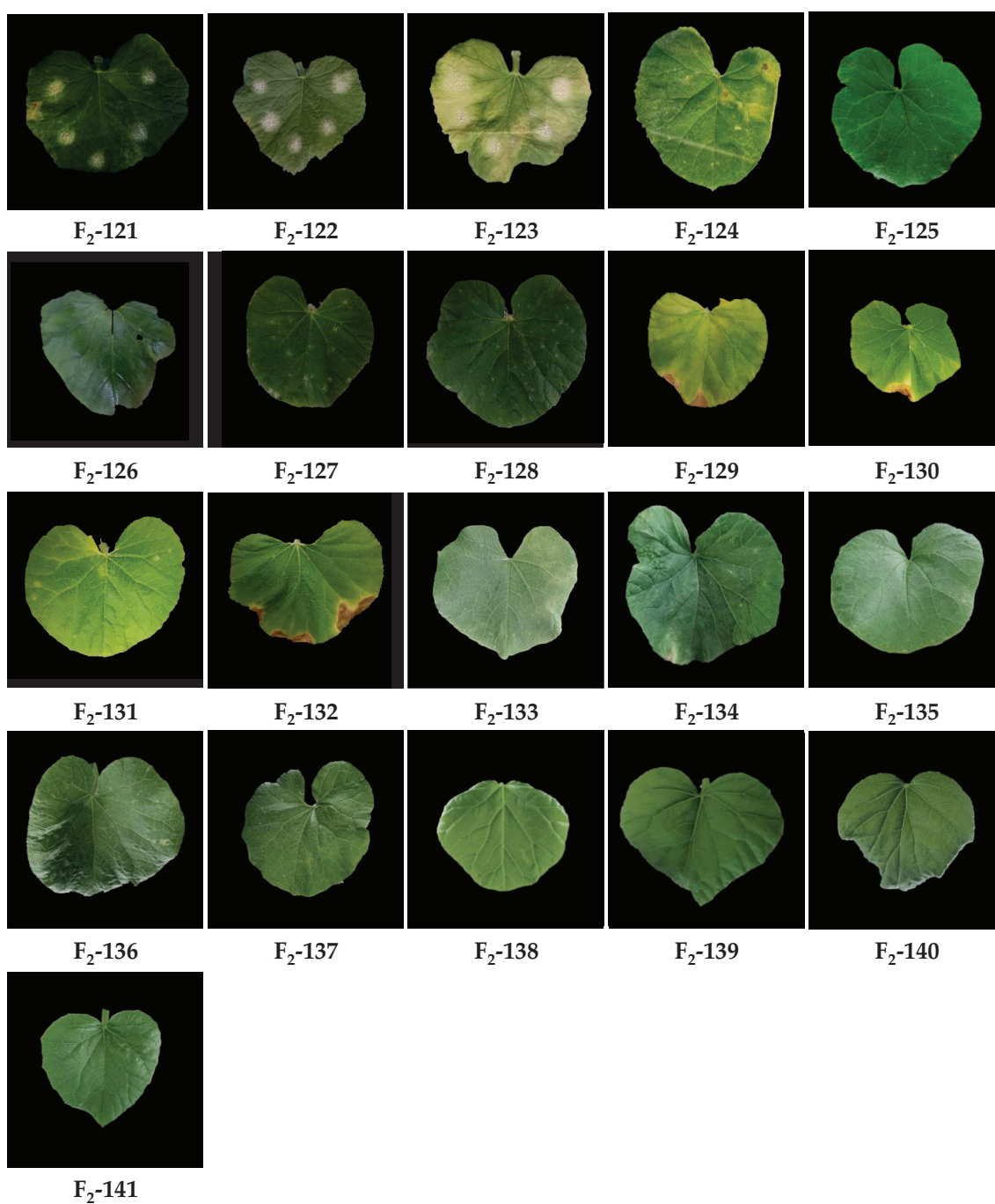
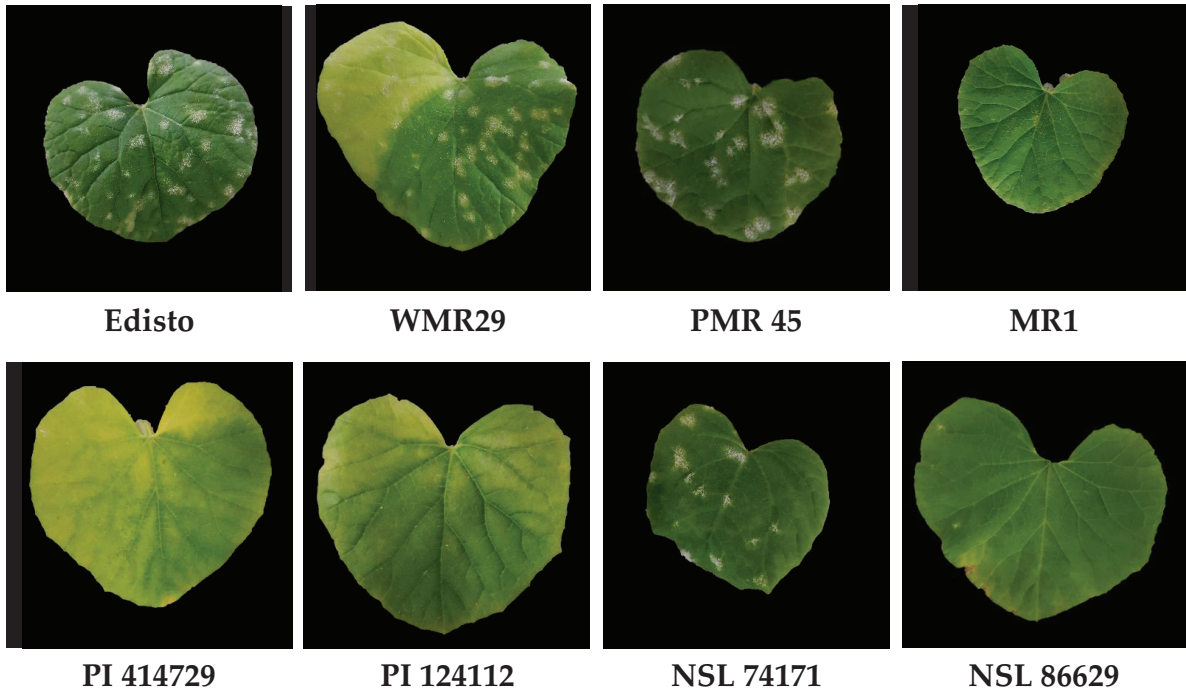


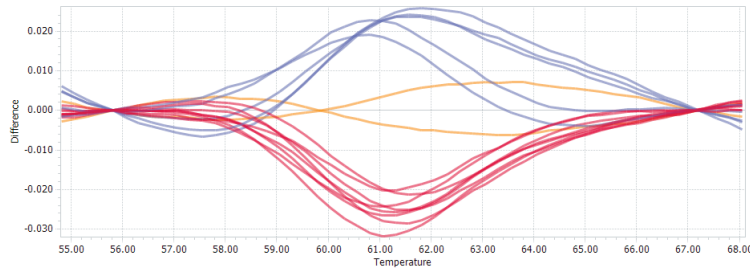
Figure S1. Continued



**Figure S2.** Phenotypes of melon accessions two-weeks after inoculated with *P. xanthii* race 5.

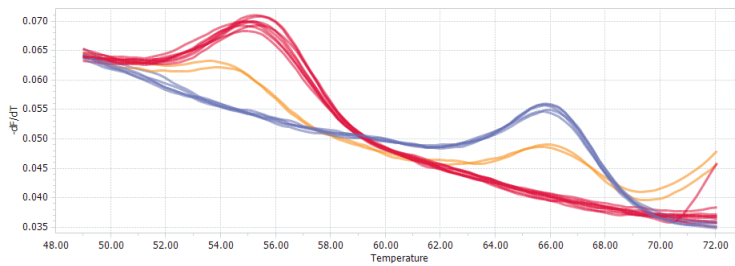


### PMm-HRM-1



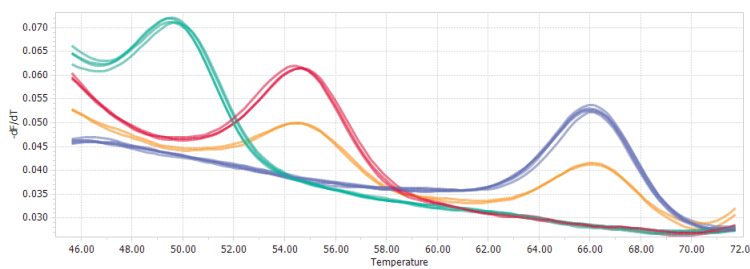
SCNU1154	MR1
PMR5	PI 414729
F1(P11x5)	PI 124112
Edisto	NSL 74171
WMR29	NSL 86629
PMR45	

### PMm-HRM-2



SCNU1154	MR1
PMR5	PI 414729
F1(P11x5)	PI 124112
Edisto	NSL 74171
WMR29	NSL 86629
PMR45	

### PMm-HRM-3



SCNU1154	MR1
PMR5	PI 414729
F1(P11x5)	PI 124112
Edisto	NSL 74171
WMR29	NSL 86629
PMR45	

**Figure S3.** Melting curves of HRM markers of PMm-HRM-1, PMm-HRM-2, and PMm-HRM-3 developed in this study. Melting curves of PMm-HRM-2 and PMm-HRM-3 present the form of normalized melting peaks curve, PMm-HRM-1 curve present the form of difference plot curves. Blue curves, Plants of 'PMR 5' genotype; red curves, Plants of 'SCNU1154' genotype; orange curves, heterozygous plants; blue green curves, another genetic variation.

